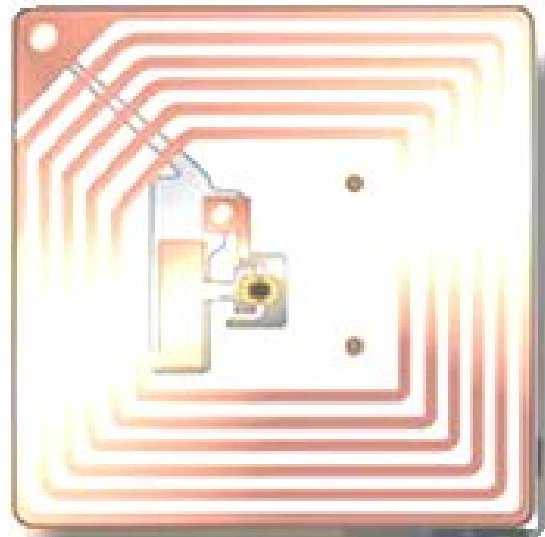


RETRIEVER ASSET MANAGEMENT SYSTEM

Advanced Software

For Windows® and Windows Mobile® Computers



Overview

A Complete Solution for Universal Asset Management

Complete Solution

Easy to Deploy

Easy to Use

Cost Effective

Managed Service

Ease of Deployment

No special skills are required to deploy the system. Basic installation is accomplished using a 'Setup CD', just as with any PC application. Even setup and configuration of the Mobile computers is simple. Mobile computers may be ordered pre-configured with the software already loaded. Alternatively, the system's Visual AppBuilder Windows Mobile Setup tool may be used to load the software quickly and easily.

Ease of Use

The number of features available throughout the entire system is large. However, the features that any given Worker is required to use have been designed to be easily learned in no more than two hours. Each Emergency Worker has easy to use screens that focus on the task at hand. The extensive use of available labor-saving technology helps to keep the learning curve small.

Cost Effective

Start with one module and add more capabilities as your Workers become comfortable with the technologies. Avoid a potential training disaster by not trying to deploy a complex system all at once.

Managed Service

Allow us to host, staff, maintain and support your System. We supply the dedicated Servers at a secure AT&T facility. We supply the Staff for Database Administration, Backup Operators, Network Specialists, Web Site Administrators. We maintain everything. We support everything.

ROI

Personnel payroll, equipment procurement and equipment maintenance are typically the three largest cost components of operating an Asset Management System. Take advantage of our economies-of-scale to reduce your year-by-year operating costs. Let us provide all required Staff. Let us procure the equipment. Let us cover the costs associated with equipment maintenance. Let us man the Help Desk. The savings over the life of the System are substantial.

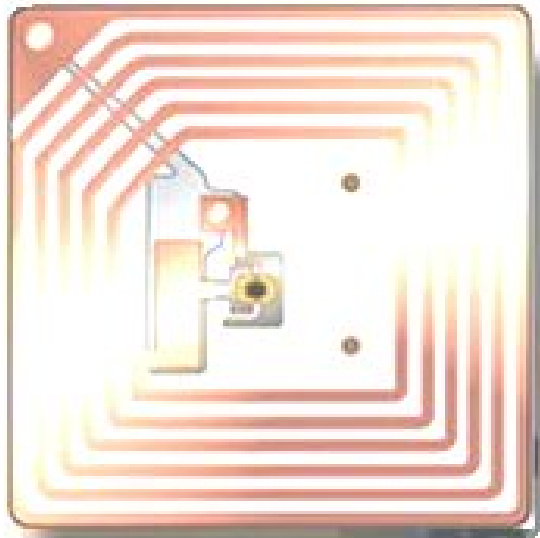
Continuity

Personnel come and personnel go. Our Managed Service Keeps your System running smoothly in today's business environment, where continuity is difficult to obtain internally. Your System will benefit from having multiple highly trained AT&T Professionals on the job, around the clock.

Features

Benefits

Mobility	Portable convenience and a familiar, flexible computing platform. RAMS provides a complete turnkey solution.
Client-Server or Browser-based	The Management application may be deployed on a Windows desktop, on a Windows laptop or access via Internet Explorer (or any other standard web browser)
Assign Bar Codes	Affix a pre-printed barcode label and scan it into your mobile computer. Enter details about the asset. Its that simple to enroll fixed assets into the system.
Bar Code Labels	Print Bar Code labels for your fixed assets and locations from a full size Laser or Ink Jet from your PC. You may also print labels on a portable printer directly from your mobile computer.
Reports	Print, e-mail or export inventory reports with the click of a button directly from the PC application. Export formats include Excel spreadsheet, SQL database, delimited file and flat file.
Catalog	Use the desktop application to create fixed asset groups. This allows you to categorize your assets into groups. Only view the drop down list of the group you are working with. This saves critical time during an inventory. The mobile computer can maintain a catalog of thousands of assets that can easily be accessed when grouped.
RFID Tagging	Utilize the latest RFID tagging and scanning technology.
Store-and-Forward	Store data locally, on the mobile computer, until a suitable network is available
Mobile RFID Readers	Use a mobile computer equipped with an RFID tag reader to speed up the asset tracking process in the field.



Retriever Asset Management System

Retriever Software, Inc.
7040 Avenida Encinas, Suite 104
Carlsbad, CA 92011
Voice: 760 929 2101
Fax: 760 929 2111

Email: info@retrieversoftware.com
[Http://www.retrieversoftware.com](http://www.retrieversoftware.com)